

PHM Asia Pacific 2021

Asia Pacific Conference of
the Prognostics and Health Management Society 2021

Pioneering Digital Journal with PHM

Hybrid Conference Guideline

Ramada Plaza Jeju Hotel, Jeju, Republic of Korea
September 8 - 11, 2021

Hosted by





ASIA PACIFIC CONFERENCE OF THE PROGNOSITCS AND HEALTH MANAGEMENT SOCIETY 2021

HYBRID CONFERENCE GUIDELINE
Pioneering Digital Journal with PHM

TABLE of CONTENTS

Invitation	3
Hybrid Conference Guidelines	4
Hybrid Operations Overview	5 - 6
General Information	7



INVITATION

Dear Colleagues,

It is our great honor for us to invite you to attend the third Asia Pacific Conference of the Prognostics and Health Management Society (PHM Asia Pacific 2021), hosted by the KSPHM (Korean Society for Prognostics and Health Management) and PHM Society. The PHM Asia Pacific 2021 will be held from September 8 to 11 at Jeju Island, Republic of Korea. The theme of the PHM Asia Pacific 2021 is 'Pioneering a Digital Journey with PHM'.

As COVID-19 abruptly sweeps the globe, untact activities are becoming a new normal. As a consequence, digital technologies including AI, big data, IoT and so on are playing a key role in our daily lives. The PHM Asia Pacific 2021, with researchers' latest works and inspiring ideas, will serve as a platform of experiencing PHM technology as a way of pioneering a digital journey.

Prominent scholars, key engineers, and industrial experts from diverse industrial sectors will be brought together to have an indepth discussion on PHM technologies in a digital transformation era.

We would like to welcome all the attendees to the PHM Asia Pacific 2021 and look forward to your participation and support.



Youn, Byeng Dong

General Chair of PHM Asia Pacific 2021

Hybrid Conference Guidelines

Category		Operation	
		Offline (Domestic)	Online (Overseas)
Keynote Speakers	Presentation Video	Pre-recorded presentation must be submitted via website by Aug. 27, 2021 .	
	Q&A	<ul style="list-style-type: none"> - Speakers must participate in real time, whether offline or online. - The presentation including Q&A will be recorded and uploaded after your presentation by the staff. 	
	Participation	Considering being broadcast on ZOOM, arrive at session room 15 minutes prior to session .	
Invited /Oral Speakers	Presentation Video	Pre-recorded presentation must be submitted via website by Aug. 27, 2021 .	
	Q&A	<ul style="list-style-type: none"> - Speakers must decide whether to participate in live Q&A while submitting their video on website. (Please consider the time difference.) - The presentation including Q&A will be recorded and uploaded after your presentation by the staff. 	
	Participation	All speakers (who even participate in live Q&A) are responsible for answering the questions at the website until 17th of September at the latest.	
Poster	Presentation Video	5 min. pre-recorded presentation must be submitted via website by Aug. 27, 2021 .	
	Presentation	<ul style="list-style-type: none"> - Under the social distance policy, direct face-to-face presentation of posters will be omitted. 	-
	Q&A	All speakers are responsible for answering the questions at the website until 17th of September at the latest.	
Participants		<p>All participants are able to watch the presentation video or leave a question or comment on the website during conference period.</p> <ul style="list-style-type: none"> - Participate in the session room. <p>※ Due to social distancing, access to the session hall may be restricted at the site. In this case, online participation through Zoom is recommended.</p>	Participate in real time through ZOOM.

Hybrid Operations Overview 1/2

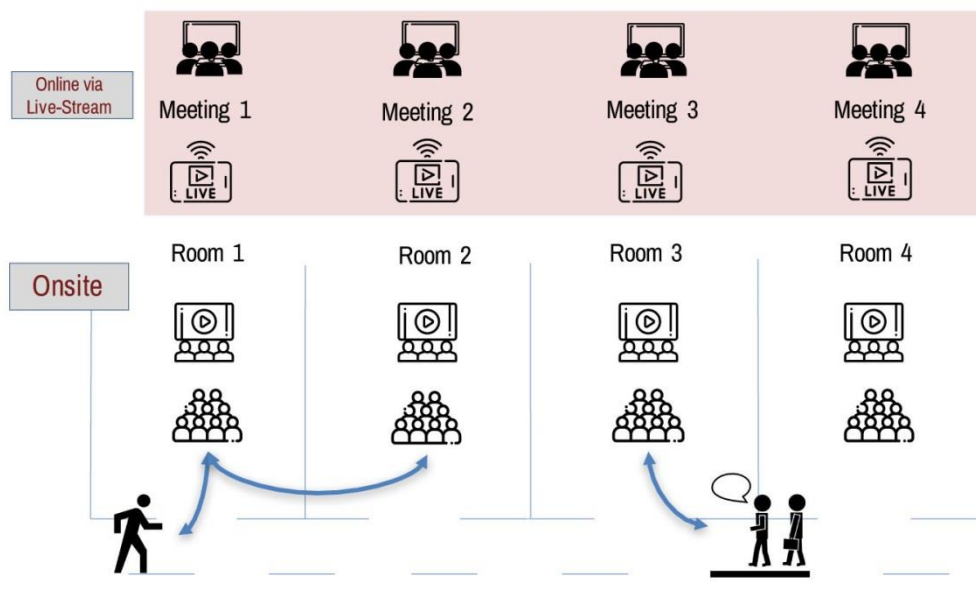
The PHMAP21 Hybrid Model

Onsite-online hybrid model ensures effective interaction between online participants (participants that are not at the venue) and onsite participants (participants that can attend the venue).



Onsite & Online Operations

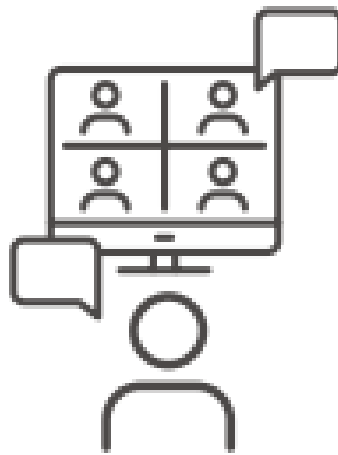
Each room in the conference venue will be equipped with a screen and a camera, so that participants can join a zoom meeting together and connect with other participants. Whether onsite or online, attendees can freely change room, depending on what presentations are of the most interest. All sessions will be broadcast (live-streamed) to the website on PHMAP21.



Onsite & Online Hybrid Operations Overview 2/2

Onsite & Online Communication

Onsite and Online participants will be able to engage with onsite speakers via the Zoom chat interface, leaving questions and comments on the PHMAP21 website, which the session moderator can navigate through. Also, The presenters are responsible for answering the questions at the website until 17th of September at the latest.



Room Overview and Roles Involved

Each presentation session will involve the following support roles: Session Chair – moderates the panel; Admin support – hosts the zoom meeting; Technical support – prevents onsite technical issues. Admin staff and Session Chair do not have to be onsite.



Admin Support



Technical Support



Presenters



Session Moderator



Live Broadcast

Online Audience



Audience

General Information

Time Zone

The live stream schedule is based on Korea Standard Time (KST) / UTC +9

Check the current local time in Korea

Precautions

Offline Participants

- All participants are required to have their temperature checked.
- Entry is restricted in case of fever (37.5 °C or higher) and respiratory symptoms (cough, sore throat, etc.).
- Keep a 2-meter distance from each other in the session room. (Photo will be taken in order to keep the room setting.)
- Masks must be worn in all spaces.
- Wash hands often and use hand sanitizer provided.
- **Due to social distancing, access to the session hall may be restricted at the site. In this case, online participation through Zoom is recommended.**

Online Participants

- We recommend you check the network before the session.
- If your security system settings prevent you from accessing through PC, watch it on your mobile device.
- Viewing will be restricted when two or more people enter with the same ID.
- Only one device (PC or mobile) can enter.
- Avoid simultaneous access.
- Use of Chrome/ Safari/ Edge/ Firefox browser is recommended.
- Using Internet Explorer may restrict viewing or access.

※ Some policies may be changed or added according to Jeju-style social distancing and the PHMAP21 Organizing Committee will conduct the event in compliance with the policy.

PHMAP21 will do our best to ensure safety of our attendees.



1. All participants' body temperature will be checked at the entrance.
2. Hand sanitizer will be provided.
3. All participants must wear a mask.
4. Keep a 2-meter distance from each other in the session room.
5. An attendee list will be made.